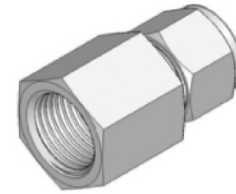
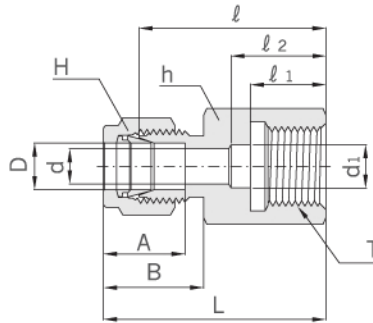


Gauge Connector

AGC



Connects Fractional Tube To Female NPT Thread (Gauge)

Part No.	Tube O.D. D		T G(PF)	d Min.	d ₁	Width across flat				A	B	ℓ	ℓ ₁	ℓ ₂	L
	in	mm				h		H							
						in	mm	in	mm						
AGC - 0402G	1/4	6.35	1/8	4.82	-	9/16	14.28	9/16	14.28	15.24	17.78	24.30	10.00	-	31.55
AGC - 0404G	1/4	6.35	1/4	4.82	5.58	3/4	19.05	9/16	14.28	15.24	17.78	30.22	13.00	17.0	37.59
AGC - 0406G	1/4	6.35	3/8	4.82	6.50	15/16	23.81	9/16	14.28	15.24	17.78	30.22	14.10	17.0	37.59
AGC - 0408G	1/4	6.35	1/2	4.82	6.50	11/16	26.98	9/16	14.28	15.24	17.78	36.07	18.80	23.0	43.43
AGC - 0504G	5/16	7.93	1/4	5.58	-	3/4	19.05	5/8	15.87	16.25	18.54	30.98	13.00	-	38.35
AGC - 0508G	5/16	7.93	1/2	6.30	-	1-1/16	26.98	5/8	15.87	16.25	18.54	33.02	19.00	-	40.38
AGC - 0604G	3/8	9.52	1/4	5.58	-	3/4	19.05	11/16	17.46	16.76	19.30	31.75	12.95	-	39.12
AGC - 0606G	3/8	9.52	3/8	6.50	-	15/16	23.81	11/16	17.46	16.76	19.30	31.24	14.00	-	38.61
AGC - 0608G	3/8	9.52	1/2	7.11	-	1-1/16	26.98	11/16	17.46	16.76	19.30	34.54	18.80	-	41.91
AGC - 0804G	1/2	12.70	1/4	5.50	-	13/16	20.63	7/8	22.22	22.86	21.84	31.80	12.90	-	41.95
AGC - 0806G	1/2	12.70	3/8	6.50	-	15/16	23.81	7/8	22.22	22.86	21.84	34.29	14.24	-	44.45
AGC - 0808G	1/2	12.70	1/2	7.11	-	1-1/16	26.98	7/8	22.22	22.86	21.84	38.10	18.80	-	48.26

Connects Metric Tube To ISO Parallel Thread (Gauge)

Part No.	Tube O.D. D	T G(PF)	d Min.	d ₁	Width across flat		A	B	ℓ	ℓ ₁	ℓ ₂	L
					h	H						
					AGC - M0304G	3						
AGC - M0604G	6	1/4	4.8	5.5	19	14	15.3	17.7	30.2	12.9	17	37.6
AGC - M0606G	6	3/8	4.8	6.5	24	14	15.3	17.7	30.2	14.0	17	37.6
AGC - M0608G	6	1/2	4.8	7.0	27	14	15.3	17.7	36.3	18.8	23	43.0
AGC - M0804G	8	1/4	5.5	-	19	16	16.2	18.6	31.0	12.9	-	38.5
AGC - M0806G	8	3/8	6.3	-	24	16	16.2	18.6	28.7	14.0	-	36.2
AGC - M0808G	8	1/2	6.3	-	27	16	16.2	18.6	33.5	18.8	-	41.0
AGC - M1004G	10	1/4	5.5	-	19	19	17.2	19.5	31.8	12.9	-	39.4
AGC - M1006G	10	3/8	6.5	-	24	19	17.2	19.5	31.2	14.0	-	38.8
AGC - M1008G	10	1/2	7.0	-	27	19	17.2	19.5	34.5	18.8	-	41.4
AGC - M1204G	12	1/4	5.5	-	22	22	22.8	22.0	31.8	12.9	-	41.9
AGC - M1206G	12	3/8	6.5	-	24	22	22.8	22.0	34.3	14.0	-	44.4
AGC - M1208G	12	1/2	7.0	-	27	22	22.8	22.0	38.1	18.8	-	48.2
AGC - M2008G	20	1/2	7.0	-	30	32	26.0	22.0	44.2	18.8	-	54.3
AGC - M2208G	22	1/2	7.0	-	30	32	26.0	22.0	44.2	18.8	-	54.3