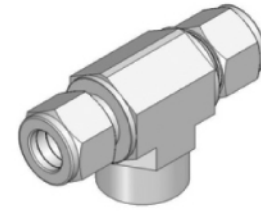
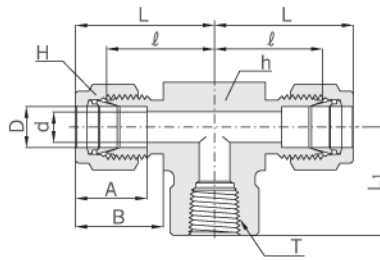


Female Branch Tee

AFBT



Connects Fractional Tube To Male NPT Thread

Part No.	Tube O.D. D		T* (NPT)	d Min.	Width across flat				A	B	ℓ	L	L ₁
	in	mm			h		H						
					in	mm	in	mm					
AFBT - 0202N	1/8	3.17	1/8	2.28	9/16	14.28	7/16	11.11	12.70	15.24	18.03	24.38	19.05
AFBT - 0402N	1/4	6.35	1/8	4.82	9/16	14.28	9/16	14.28	15.24	17.78	19.55	26.92	19.05
AFBT - 0404N	1/4	6.35	1/4	4.82	11/16	17.46	9/16	14.28	15.24	17.78	22.35	29.71	22.35
AFBT - 0604N	3/8	9.52	1/4	7.11	11/16	17.46	11/16	17.46	16.76	19.30	23.87	31.24	22.35
AFBT - 0804N	1/2	12.70	1/4	10.41	13/16	20.63	7/8	22.22	22.86	21.84	25.90	36.06	22.35
AFBT - 0806N	1/2	12.70	3/8	10.41	13/16	20.63	7/8	22.22	22.86	21.84	25.90	36.06	22.35
AFBT - 0808N	1/2	12.70	1/2	10.41	1	25.40	7/8	22.22	22.86	21.84	28.70	38.86	28.44
AFBT - 1008N	5/8	15.87	1/2	12.70	1	25.40	1	25.40	24.38	21.84	28.70	38.86	28.44
AFBT - 1212N	3/4	19.05	3/4	15.74	1-3/8	34.92	1-1/8	28.57	24.38	21.84	34.54	44.70	31.75
AFBT - 1612N	1	25.40	3/4	22.35	1-3/8	34.92	1-1/2	38.10	31.24	26.41	36.83	49.02	31.75
AFBT - 1616N	1	25.40	1	22.35	1-11/16	42.86	1-1/2	38.10	31.24	26.41	44.20	53.59	38.10

Connects Metric Tube To Male NPT Thread

Part No.	Tube O.D. D	T* (NPT)	d Min.	Width across flat		A	B	ℓ	L	L ₁
				h						
				in	mm					
AFBT - M0602N	6	1/8	4.8	14.0	14	15.3	17.7	19.6	27.0	19.0
AFBT - M0604N	6	1/4	4.8	17.5	14	15.3	17.7	22.4	29.8	22.4
AFBT - M0606N	6	3/8	4.8	20.6	14	15.3	17.7	24.4	31.7	22.4
AFBT - M0608N	6	1/2	4.8	25.4	14	15.3	17.7	27.2	34.5	28.4
AFBT - M0802N	8	1/8	6.3	15.8	16	16.2	18.6	23.1	29.9	19.0
AFBT - M0804N	8	1/4	6.3	17.5	16	16.2	18.6	23.1	30.6	22.4
AFBT - M0806N	8	3/8	6.3	20.6	16	16.2	18.6	25.2	32.4	22.4
AFBT - M0808N	8	1/2	6.3	25.4	16	16.2	18.6	28.0	35.2	28.4
AFBT - M1004N	10	1/4	7.9	20.6	19	17.2	19.5	25.9	33.5	22.4
AFBT - M1006N	10	3/8	7.9	20.6	19	17.2	19.5	25.9	33.3	22.4
AFBT - M1008N	10	1/2	7.9	25.4	19	17.2	19.5	28.7	36.1	22.4
AFBT - M1204N	12	1/4	9.5	20.6	22	22.8	22.0	25.9	36.0	22.4
AFBT - M1206N	12	3/8	9.5	20.6	22	22.8	22.0	25.9	36.0	22.4
AFBT - M1208N	12	1/2	9.5	25.4	22	22.8	22.0	28.7	38.8	28.4
AFBT - M1608N	16	1/2	12.7	25.4	25	24.4	22.0	28.7	38.8	28.4

* ISO Tapered threads are available upon request.