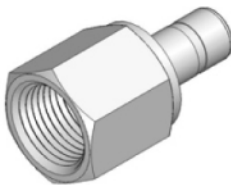
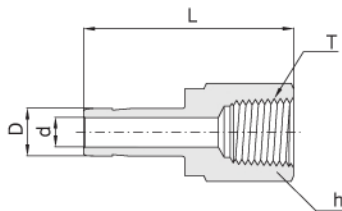


Female Adapter

AFA



Connects Fractional Hn-Lok Port To Female NPT Thread

Part No.	Tube O.D. D		T* (NPT)	d Min.	Width across flat h		L
	in	mm			in	mm	
AFA - 02T02N	1/8	3.17	1/8	2.03	9/16	14.28	31.50
AFA - 02T04N	1/8	3.17	1/4	2.03	3/4	19.05	35.30
AFA - 03T02N	3/16	4.76	1/8	3.04	9/16	14.28	32.00
AFA - 03T04N	3/16	4.76	1/4	3.04	3/4	19.05	35.81
AFA - 04T02N	1/4	6.35	1/8	4.32	9/16	14.28	33.02
AFA - 04T04N	1/4	6.35	1/4	4.32	3/4	19.05	37.10
AFA - 04T06N	1/4	6.35	3/8	4.32	7/8	22.22	39.37
AFA - 04T08N	1/4	6.35	1/2	4.32	1-1/16	26.98	45.50
AFA - 05T02N	5/16	7.93	1/8	5.59	9/16	14.28	34.29
AFA - 05T04N	5/16	7.93	1/4	5.59	3/4	19.05	37.59
AFA - 06T02N	3/8	9.52	1/8	6.86	9/16	14.28	34.29
AFA - 06T04N	3/8	9.52	1/4	6.86	3/4	19.05	38.10
AFA - 06T06N	3/8	9.52	3/8	6.86	7/8	22.22	40.38
AFA - 06T08N	3/8	9.52	1/2	6.86	1-1/16	26.98	46.73
AFA - 08T04N	1/2	12.70	1/4	9.40	3/4	19.05	43.43
AFA - 08T06N	1/2	12.70	3/8	9.40	7/8	22.22	45.46
AFA - 08T08N	1/2	12.70	1/2	9.40	1-1/16	26.98	51.80
AFA - 10T06N	5/8	15.87	3/8	11.94	7/8	22.22	48.26
AFA - 10T08N	5/8	15.87	1/2	11.94	1-1/16	26.98	53.00
AFA - 10T12N	5/8	15.87	3/4	11.94	1-5/16	33.33	55.37
AFA - 12T08N	3/4	19.05	1/2	14.73	1-1/16	26.98	52.83
AFA - 12T12N	3/4	19.05	3/4	14.73	1-5/16	33.33	54.86
AFA - 12T16N	3/4	19.05	1	14.73	1-5/8	41.27	58.42
AFA - 14T12N	7/8	22.22	3/4	18.20	1-5/16	33.33	57.15
AFA - 16T12N	1	25.40	3/4	20.32	1-5/16	33.33	60.70
AFA - 16T16N	1	25.40	1	20.32	1-5/8	41.27	64.26
AFA - 20T20N	1-1/4	31.75	1-1/4	25.91	2-1/8	53.97	77.72
AFA - 24T24N	1-1/2	38.10	1-1/2	31.75	2-3/8	60.32	88.90
AFA - 32T32N	2	50.80	2	43.69	2-7/8	73.03	107.44

* ISO Tapered Threads are available upon request.

Connects Metric Hn-Lok Port To Male ISO Taperad Thread

Part No.	Tube O.D. D	T* R(PT)	d Min.	Width across flat h	L
AFA - M03T02R	3	1/8	1.9	14	31.15
AFA - M06T02R	6	1/8	4.1	14	32.50
AFA - M06T04R	6	1/4	4.1	19	37.10
AFA - M08T04R	8	1/4	5.6	19	37.60
AFA - M10T04R	10	1/4	7.1	19	38.10
AFA - M10T06R	10	3/8	7.1	22	40.10
AFA - M10T08R	10	1/2	7.1	27	46.50
AFA - M12T04R	12	1/4	8.8	19	43.70
AFA - M12T06R	12	3/8	8.8	22	46.00
AFA - M12T08R	12	1/2	8.8	27	52.30
AFA - M18T12R	18	3/4	13.9	35	54.80

* NPT Threads are available upon request.