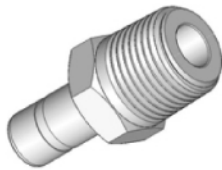
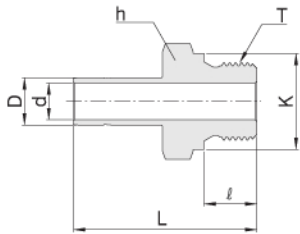




Male Adapter For Bonded Washer Seal

## AMA-G



Connects Fractional Hn-Lok Port To Female ISO Parallel Thread

Part No.	Tube O.D. D		T G(PF)	d min.	Width across flat h		ℓ	L	K
	in	mm			in	mm			
AMA-G - 02T02G	1/8	3.17	1/8	2.03	9/16	14.28	7.11	30.99	13.72
AMA-G - 02T04G	1/8	3.17	1/4	2.03	3/4	19.05	11.17	35.81	17.78
AMA-G - 04T02G	1/4	6.35	1/8	4.06	9/16	14.28	7.11	33.27	13.72
AMA-G - 04T04G	1/4	6.35	1/4	4.32	3/4	19.05	11.17	38.10	17.78
AMA-G - 06T04G	3/8	9.52	1/4	5.84	3/4	19.05	11.17	39.88	17.78
AMA-G - 06T06G	3/8	9.52	3/8	6.86	7/8	22.22	11.17	40.64	21.59
AMA-G - 08T04G	1/2	12.70	1/4	5.84	3/4	19.05	11.17	45.47	17.78
AMA-G - 08T06G	1/2	12.70	3/8	7.88	7/8	22.22	11.17	46.23	21.59
AMA-G - 08T08G	1/2	12.70	1/2	9.40	1 1/16	26.98	14.22	49.28	25.91
AMA-G - 12T12G	3/4	19.05	3/4	14.73	1 5/16	33.33	15.75	54.88	31.75
AMA-G - 16T16G	1	25.40	1	19.80	1 5/8	41.27	18.29	64.52	38.86

Plugs unused port of metric Hn-Lok fittings.

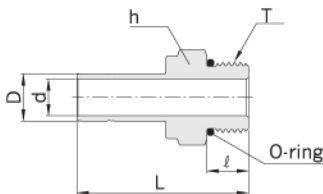
Connects Metric Hn-Lok Port To Female ISO Parallel Thread

Part No.	Tube O.D. D	T G(PF)	d min.	Width across flat h	ℓ	L	K
AMA-G - M06T02G	6	1/8	4.0	14	7.1	34.3	13.7
AMA-G - M06T04G	6	1/4	4.1	19	11.2	39.1	17.9
AMA-G - M08T04G	8	1/4	5.6	19	11.2	40.1	17.9
AMA-G - M10T04G	10	1/4	5.9	19	11.2	40.9	17.9
AMA-G - M10T06G	10	3/8	7.1	22	11.2	41.7	21.7
AMA-G - M10T08G	10	1/2	7.1	27	14.2	44.7	25.9
AMA-G - M12T04G	12	1/4	5.9	19	11.2	46.7	17.9
AMA-G - M12T06G	12	3/8	7.9	22	11.2	47.2	21.7
AMA-G - M12T08G	12	1/2	8.8	27	14.2	50.5	25.9
AMA-G - M18T08G	18	1/2	11.9	27	14.2	52.1	25.9
AMA-G - M18T12G	18	3/4	13.9	35	15.7	56.1	31.9
AMA-G - M28T16G	28	1	19.8	41	18.3	72.9	39.0
AMA-G - M28T20G	28	1 1/4	22.5	50	19.8	77.0	49.0
AMA-G - M30T20G	30	1 1/4	24.3	50	19.8	80.8	49.0
AMA-G - M32T20G	32	1 1/4	26.5	50	19.8	81.8	49.0
AMA-G - M38T24G	38	1 1/2	31.6	55	22.1	94.5	54.7

Plugs unused port of metric Hn-Lok fittings.

SAE / MS Male Adapter

## AMAS



Connects Fractional Hn-Lok Port To SAE/MS Straight Thread Boss

Part No.	Tube O.D. D		Straight Thread T(U)	d min.	Width across flat h		ℓ	L	O-ring Uniform Size Number
	in	mm			in	mm			
AMAS - 02T02U	1/8	3.17	5/16-24	2.03	7/16	11.11	7.62	30.48	-902
AMAS - 04T04U	1/4	6.35	7/16-20	4.32	9/16	14.28	9.14	35.31	-904
AMAS - 06T04U	3/8	9.52	7/16-20	5.08	9/16	14.28	9.14	37.08	-904
AMAS - 06T06U	3/8	9.52	9/16-18	6.86	11/16	17.46	9.90	38.61	-906
AMAS - 06T08U	3/8	9.52	3/4-16	6.86	7/8	22.22	11.17	40.64	-908
AMAS - 08T06U	1/2	12.7	9/16-18	7.11	11/16	17.46	9.90	44.19	-906
AMAS - 08T08U	1/2	12.7	3/4-16	9.40	7/8	22.22	11.17	46.23	-908
AMAS - 10T10U	5/8	15.87	7/8-14	11.94	1	25.40	12.70	49.27	-910
AMAS - 12T12U	3/4	19.05	1 1/16-12	14.73	1 1/4	31.75	14.98	53.34	-912
AMAS - 16T16U	1	25.40	1 5/16-12	20.32	1 1/2	38.10	14.98	61.21	-916
AMAS - 20T20U	1 1/4	31.75	1 5/8-12	25.91	1 7/8	47.62	14.98	71.37	-920
AMAS - 24T24U	1 1/2	38.10	1 7/8-12	31.75	2 1/8	53.97	14.98	83.31	-924
AMAS - 32T32U	2	50.80	2 1/2-12	43.69	2 3/4	69.85	14.98	107.44	-932