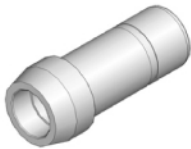
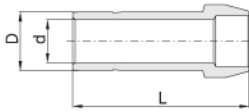


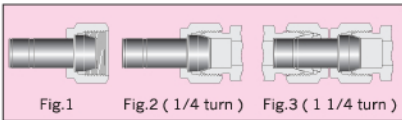


## Port Connector

# APC



### Installation Instruction Port Connectors



#### Machined Ferrule End

While holding fitting body steady, tighten the port connector one-quarter turn from the finger-tight position For 1/16", 1/8", and 3/16"; 2mm, 3mm and 4mm tube fittings, tighten the port connector one-eighth turn. For over 1in. and over 25mm tube fittings, tighten the port connector one quarter turn.

#### Reassembly

You may disassemble and reassemble Hn-Lok port connectors many times. Make subsequent connections by slightly tightening with a wrench after snugging the nut by hand.

#### Tube adapter End

1. Insert the tube adapter into the Hn-Lok two ferrule tube fittings until tubing end is firmly seated on the body shoulder and make sure the nut is hand tight (Fig.3)

2. Mark the nut at 9 o'clock position for identification of starting point.

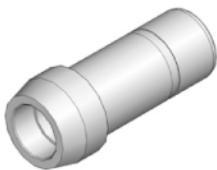
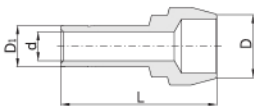
3. Tighten the nut 1 1/4turns\* with a wrench keeping the fitting body steady with a back-up wrench, when the nut is tightened 1 1/4 turns, the mark at 9 o'clock position before tightening will be at 12 o'clock position.

#### Reassembly

See Hn-Lok two ferrule tube fittings reassembly, page 71

## Reducing Port Connector

# ARPC



## Connects Two Fractional Hn-Lok Ports

Part No.	Tube O.D. D		d Min.	L
	in	mm		
APC - 01	1/16	1.58	0.76	13.72
APC - 02	1/8	3.17	2.03	22.35
APC - 04	1/4	6.35	4.32	24.89
APC - 05	5/16	7.93	5.59	25.91
APC - 06	3/8	9.52	6.86	26.67
APC - 08	1/2	12.70	9.40	36.32
APC - 12	3/4	19.05	14.73	37.85
APC - 16	1	25.40	20.32	49.28

## Connects Two Metric Hn-Lok Ports

Part No.	Tube O.D. D	d Min.	L
APC - M03	3	1.9	22.20
APC - M04	4	2.2	23.21
APC - M06	6	4.1	25.00
APC - M08	8	5.6	26.00
APC - M10	10	7.1	27.10
APC - M12	12	8.8	36.20
APC - M15	15	11.2	37.80
APC - M16	16	12.0	37.80
APC - M18	18	13.9	37.80
APC - M20	20	15.5	39.40
APC - M22	22	16.1	38.97
APC - M25	25	19.9	49.30
APC - M28	28	22.5	63.50
APC - M32	32	26.5	69.70
APC - M38	38	31.6	81.90

## Connects Two Fractional Hn-Lok Ports

Part No.	Tube O.D. D		Reduced O.D. D <sub>1</sub>		d Min.	L
	in	mm	in	mm		
ARPC - 0201	1/8	3.17	1/16	1.58	0.76	18.30
ARPC - 0401	1/4	6.35	1/16	1.58	0.76	19.05
ARPC - 0402	1/4	6.35	1/8	3.17	2.03	22.86
ARPC - 0602	3/8	9.52	1/8	3.17	2.03	23.37
ARPC - 0604	3/8	9.52	1/4	6.35	4.32	25.40
ARPC - 0804	1/2	12.70	1/4	6.35	4.32	29.72
ARPC - 0806	1/2	12.70	3/8	9.52	6.86	30.73
ARPC - 1208	3/4	19.05	1/2	12.70	9.40	37.85
ARPC - 1608	1	25.40	1/2	12.70	9.40	42.93
ARPC - 1612	1	25.40	3/4	19.05	14.73	43.69

## Connects Two Metric Hn-Lok Ports

Part No.	Tube O.D. D	Reduced O.D. D <sub>1</sub>	d Min.	L
ARPC - M0603M	6	3	1.9	22.90
ARPC - M0806M	8	6	4.1	25.40
ARPC - M1006M	10	6	4.1	25.80
ARPC - M1008M	10	8	5.6	26.30
ARPC - M1206M	12	6	4.1	29.60
ARPC - M1208M	12	8	5.6	30.10
ARPC - M1210M	12	10	7.1	30.60
ARPC - M1606M	16	6	4.1	29.37
ARPC - M1612M	16	12	8.8	37.50
ARPC - M2825M	28	25	19.9	56.50
ARPC - M3225M	32	25	19.9	60.30
ARPC - M3825M	38	25	19.9	65.80