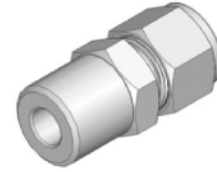
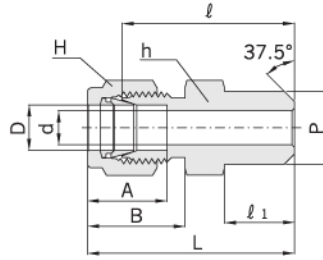




## Pipe Butt Weld Connector

# ABWC



## Connects Fractional Tube To SAE / MS Straight Thread Boss

Part No.	Tube O.D. D		Male Pipe Size P		d Min.	Width across flat				A	B	ℓ	ℓ <sub>1</sub>	L
	in	mm	Nom.	O.D.		h		H						
						in	mm	in	mm					
ABWC - 0202P	1/8	3.17	1/8	10.30	2.28	7/16	11.11	7/16	11.11	12.70	15.24	23.87	9.65	31.24
ABWC - 0302P	3/16	4.76	1/8	10.30	3.04	7/16	11.11	1/2	12.70	13.71	16.00	24.63	9.65	31.24
ABWC - 0402P	1/4	6.35	1/8	10.30	4.82	1/2	12.70	9/16	14.28	15.24	17.78	25.40	9.65	32.76
ABWC - 0404P	1/4	6.35	1/4	13.70	4.82	9/16	14.28	9/16	14.28	15.24	17.78	30.48	14.22	37.84
ABWC - 0502P	5/16	7.93	1/8	10.30	5.08	9/16	14.28	5/8	15.87	16.25	18.54	26.67	9.65	34.03
ABWC - 0504P	5/16	7.93	1/4	13.70	6.35	9/16	14.28	5/8	15.87	16.25	18.54	31.24	14.22	38.60
ABWC - 0604P	3/8	9.52	1/4	13.70	7.11	5/8	15.87	11/16	17.46	16.76	19.30	32.51	14.22	39.87
ABWC - 0606P	3/8	9.52	3/8	17.10	7.11	11/16	17.46	11/16	17.46	16.76	19.30	32.51	14.22	39.87
ABWC - 0608P	3/8	9.52	1/2	21.30	7.11	7/8	22.22	11/16	17.46	16.76	19.30	38.86	19.05	46.23
ABWC - 0612P	3/8	9.52	3/4	26.67	7.11	1-1/16	26.98	11/16	17.46	16.76	19.30	40.38	19.05	47.75
ABWC - 0806P	1/2	12.70	3/8	17.10	10.41	13/16	20.63	7/8	22.22	22.86	21.84	33.27	14.22	43.43
ABWC - 0808P	1/2	12.70	1/2	21.30	10.41	7/8	22.22	7/8	22.22	22.86	21.84	38.86	19.05	49.02
ABWC - 0812P	1/2	12.70	3/4	26.67	10.41	1-1/16	26.98	7/8	22.22	22.86	21.84	40.38	19.05	50.54
ABWC - 1008P	5/8	15.87	1/2	21.30	12.70	15/16	23.81	1	25.40	24.38	21.84	38.86	19.05	49.02
ABWC - 1212P	3/4	19.05	3/4	26.67	15.74	1-1/16	26.98	1-1/8	28.57	24.38	21.84	40.38	19.05	50.54
ABWC - 1616P	1	25.40	1	33.40	22.35	1-3/8	34.92	1-1/2	38.10	31.24	26.41	50.03	23.87	62.23
ABWC - 2020P	1-1/4	31.75	1-1/4	42.16	27.68	1-3/4	44.45	1-7/8	47.62	41.14	38.86	55.11	23.87	77.21
ABWC - 2424P	1-1/2	38.10	1-1/2	48.26	34.03	2-1/8	53.97	2-1/4	57.15	50.03	45.21	61.72	26.16	88.90
ABWC - 3232P	2	50.80	2	60.32	45.97	2-3/4	69.85	3	76.20	67.56	62.73	76.20	26.92	113.53

## Connects Fractional Tube To Pipe

Part No.	Tube O.D. D	Male Pipe Size P		d Min.	Width across flat		A	B	ℓ	ℓ <sub>1</sub>	L
		Nom.	O.D.		h	H					
ABWC - M0402P	4	1/8	10.3	2.4	12.0	12	13.7	16.1	24.6	9.7	30.7
ABWC - M0602P	6	1/8	10.3	4.8	14.0	14	15.3	17.7	25.4	9.7	32.8
ABWC - M0604P	6	1/4	13.7	4.8	14.0	14	15.3	17.7	30.2	14.2	37.6
ABWC - M0802P	8	1/8	10.3	5.1	14.0	16	16.2	18.6	26.7	9.7	34.2
ABWC - M0804P	8	1/4	13.7	6.3	14.0	16	16.2	18.6	31.2	14.2	38.7
ABWC - M0808P	8	1/2	21.3	6.3	22.0	16	16.2	18.6	38.1	19.1	44.8
ABWC - M1004P	10	1/4	13.7	7.1	17.0	19	17.2	19.5	33.3	14.2	40.9
ABWC - M1006P	10	3/8	17.1	7.9	19.0	19	17.2	19.5	33.3	14.2	40.1
ABWC - M1008P	10	1/2	21.3	7.9	22.0	19	17.2	19.5	38.1	19.1	45.7
ABWC - M1204P	12	1/4	13.7	7.1	22.0	22	22.8	22.0	33.3	14.2	43.4
ABWC - M1206P	12	3/8	17.1	9.5	22.0	22	22.8	22.0	33.3	14.2	43.4
ABWC - M1208P	12	1/2	21.3	9.5	22.0	22	22.8	22.0	38.1	19.1	48.2
ABWC - M1406P	14	3/8	17.1	10.3	24.0	25	24.4	22.0	34.0	14.2	44.1
ABWC - M1508P	15	1/2	21.3	11.9	24.0	25	24.4	22.0	38.9	19.0	49.0
ABWC - M1608P	16	1/2	21.3	12.7	24.0	25	24.4	22.0	38.9	19.0	49.0
ABWC - M1808P	18	1/2	21.3	13.5	27.0	30	24.4	22.0	40.4	19.0	50.5
ABWC - M3220P	32	1-1/4	42.2	28.6	46.0	50	42.0	41.6	56.6	23.9	79.6
ABWC - M3824P	38	1-1/2	48.3	33.7	55.0	60	49.4	47.9	64.0	26.2	91.6

Note : All Hn-Lok pipe weld ends have schedule 80 wall thickness or greater.

Tube To Weld End