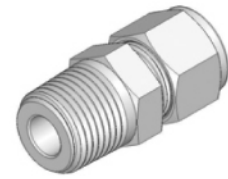
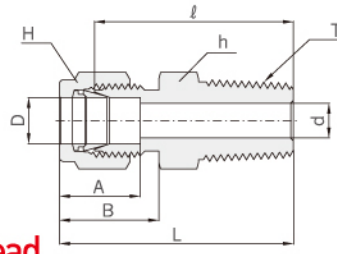


Tube To Male Pipe



Male Connector **AMC**

Connects Fractional Tube To Female NPT Thread



Tube To Male Pipe

Part No.	Tube O.D. D		T* (NPT)	d Min.	Width across flat				A	B	ℓ	L
	in	mm			h		H					
					in	mm	in	mm				
AMC - 1-1N	1/16	1.58	1/16	1.27	5/16	7.93	5/16	7.93	8.63	10.92	20.00	23.83
AMC - 1-2N	1/16	1.58	1/8	1.27	7/16	11.11	7/16	11.11	8.63	10.92	22.35	26.23
AMC - 1-4N	1/16	1.58	1/4	1.27	9/16	14.28	5/16	7.93	8.63	10.92	27.17	30.98
AMC - 2-1N	1/8	3.17	1/16	2.28	7/16	11.11	7/16	11.11	12.70	15.24	23.11	29.71
AMC - 2-2N	1/8	3.17	1/8	2.28	7/16	11.11	7/16	11.11	12.70	15.24	23.87	30.48
AMC - 2-4N	1/8	3.17	1/4	2.28	9/16	14.28	7/16	11.11	12.70	15.24	28.95	35.56
AMC - 2-6N	1/8	3.17	3/8	2.28	11/16	17.46	7/16	11.11	12.70	15.24	29.21	35.81
AMC - 2-8N	1/8	3.17	1/2	2.28	7/8	22.22	7/16	11.11	12.70	15.24	35.56	42.16
AMC - 3-2N	3/16	4.76	1/8	3.04	7/16	11.11	1/2	12.70	13.71	16.00	24.63	31.24
AMC - 3-4N	3/16	4.76	1/4	3.04	9/16	14.28	1/2	12.70	13.71	16.00	29.71	36.32
AMC - 4-1N	1/4	6.35	1/16	4.82	1/2	12.70	9/16	14.28	15.24	17.78	25.40	32.76
AMC - 4-2N	1/4	6.35	1/8	4.82	1/2	12.70	9/16	14.28	15.24	17.78	25.40	32.76
AMC - 4-4N	1/4	6.35	1/4	4.82	9/16	14.28	9/16	14.28	15.24	17.78	30.48	37.84
AMC - 4-6N	1/4	6.35	3/8	4.82	11/16	17.46	9/16	14.28	15.24	17.78	30.98	38.35
AMC - 4-8N	1/4	6.35	1/2	4.82	7/8	22.22	9/16	14.28	15.24	17.78	37.33	44.70
AMC - 4-12N	1/4	6.35	3/4	4.82	1-1/16	26.98	9/16	14.28	15.24	17.78	38.86	46.22
AMC - 5-2N	5/16	7.93	1/8	4.82	9/16	14.28	5/8	15.87	16.25	18.54	26.67	34.03
AMC - 5-4N	5/16	7.93	1/4	6.35	9/16	14.28	5/8	15.87	16.25	18.54	31.24	38.60
AMC - 5-6N	5/16	7.93	3/8	6.35	11/16	17.46	5/8	15.87	16.25	18.54	31.75	39.11
AMC - 6-2N	3/8	9.52	1/8	4.82	5/8	15.87	11/16	17.46	16.76	19.30	27.94	35.30
AMC - 6-4N	3/8	9.52	1/4	7.11	5/8	15.87	11/16	17.46	16.76	19.30	32.51	39.87
AMC - 6-6N	3/8	9.52	3/8	7.11	11/16	17.46	11/16	17.46	16.76	19.30	32.51	39.87
AMC - 6-8N	3/8	9.52	1/2	7.11	7/8	22.22	11/16	17.46	16.76	19.30	38.86	46.22
AMC - 6-12N	3/8	9.52	3/4	7.11	1-1/16	26.98	11/16	17.46	16.76	19.30	40.38	47.75
AMC - 8-2N	1/2	12.70	1/8	4.82	13/16	20.63	7/8	22.22	22.86	21.84	28.70	38.86
AMC - 8-4N	1/2	12.70	1/4	7.11	13/16	20.63	7/8	22.22	22.86	21.84	33.27	43.43
AMC - 8-6N	1/2	12.70	3/8	9.65	13/16	20.63	7/8	22.22	22.86	21.84	33.27	43.43
AMC - 8-8N	1/2	12.70	1/2	10.41	7/8	22.22	7/8	22.22	22.86	21.84	38.86	49.02
AMC - 8-12N	1/2	12.70	3/4	10.41	1-1/16	26.98	7/8	22.22	22.86	21.84	40.38	50.54
AMC - 8-16N	1/2	12.70	1	10.41	1-3/8	34.92	7/8	22.22	22.86	21.84	46.99	57.15
AMC - 10-6N	5/8	15.87	3/8	9.65	15/16	23.81	1	25.40	24.38	21.84	34.03	44.19
AMC - 10-8N	5/8	15.87	1/2	11.93	15/16	23.81	1	25.40	24.38	21.84	38.86	49.02
AMC - 10-12N	5/8	15.87	3/4	12.70	1-1/16	26.98	1	25.40	24.38	21.84	40.38	50.54
AMC - 12-8N	3/4	19.05	1/2	11.93	1-1/16	26.98	1-1/8	28.57	24.38	21.84	40.38	50.54
AMC - 12-12N	3/4	19.05	3/4	15.74	1-1/16	26.98	1-1/8	28.57	24.38	21.84	40.38	50.54
AMC - 12-16N	3/4	19.05	1	15.74	1-3/8	34.92	1-1/8	28.57	24.38	21.84	46.99	57.15
AMC - 14-12N	7/8	22.22	3/4	15.74	1-3/16	30.16	1-1/4	31.75	25.90	21.84	40.38	50.54
AMC - 14-16N	7/8	22.22	1	18.28	1-3/8	34.92	1-1/4	31.75	25.90	21.84	46.99	57.15
AMC - 16-8N	1	25.40	1/2	11.93	1-3/8	34.92	1-1/2	38.10	31.24	26.41	45.21	57.40
AMC - 16-12N	1	25.40	3/4	15.74	1-3/8	34.92	1-1/2	38.10	31.24	26.41	45.21	57.40
AMC - 16-16N	1	25.40	1	22.35	1-3/8	34.92	1-1/2	38.10	31.24	26.41	50.03	62.23
AMC - 20-16N	1-1/4	31.75	1	22.35	1-3/4	44.45	1-7/8	47.62	41.14	38.86	55.11	77.21
AMC - 20-20N	1-1/4	31.75	1-1/4	27.68	1-3/4	44.45	1-7/8	47.62	41.14	38.86	55.11	77.21
AMC - 24-24N	1-1/2	38.10	1-1/2	34.03	2-1/8	53.97	2-1/4	57.15	50.03	45.21	61.72	88.90
AMC - 32-32N	2	50.80	2	45.97	2-3/4	69.85	3	76.20	67.56	62.73	76.20	113.53

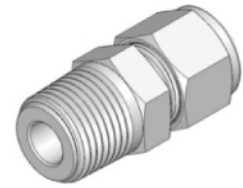
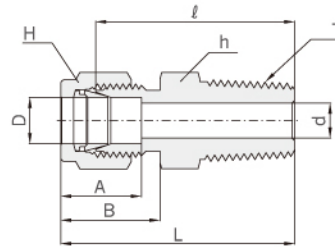
* ISO Tapered Threads are available upon request.

All dimensions are in millimeters unless otherwise specified. Dimensions are for reference only, subject to change.

Male Connector

AMC

Connects Metric Tube To Female ISO Tapered Thread



Part No.	Tube O.D. D	T* R(PT)	d Min	Width across flat		A	B	ℓ	L
				h	H				
AMC - 2M-2R	2	1/8	1.7	12	12	12.9	15.3	23.9	30.5
AMC - 3M-2R	3	1/8	2.4	12	12	12.9	15.3	23.9	30.5
AMC - 3M-4R	3	1/4	2.4	14	12	12.9	15.3	29.0	35.6
AMC - 4M-2R	4	1/8	2.4	12	12	13.7	16.1	24.6	31.2
AMC - 4M-4R	4	1/4	2.4	14	12	13.7	16.1	29.7	36.3
AMC - 6M-2R	6	1/8	4.8	14	14	15.3	17.7	25.4	32.8
AMC - 6M-4R	6	1/4	4.8	14	14	15.3	17.7	30.5	37.9
AMC - 6M-6R	6	3/8	4.8	17	14	15.3	17.7	31.0	38.4
AMC - 6M-8R	6	1/2	4.8	22	14	15.3	17.7	37.3	44.7
AMC - 8M-2R	8	1/8	4.8	14	16	16.2	18.6	26.7	34.2
AMC - 8M-4R	8	1/4	6.3	14	16	16.2	18.6	31.2	38.7
AMC - 8M-6R	8	3/8	6.3	17	16	16.2	18.6	31.8	39.2
AMC - 8M-8R	8	1/2	6.3	22	16	16.2	18.6	38.1	45.6
AMC - 10M-2R	10	1/8	4.8	17	19	17.2	19.5	28.7	36.3
AMC - 10M-4R	10	1/4	7.1	17	19	17.2	19.5	33.3	40.9
AMC - 10M-6R	10	3/8	7.9	17	19	17.2	19.5	33.3	40.9
AMC - 10M-8R	10	1/2	7.9	22	19	17.2	19.5	38.9	46.5
AMC - 12M-4R	12	1/4	7.1	22	22	22.8	22.0	33.3	43.4
AMC - 12M-6R	12	3/8	9.5	22	22	22.8	22.0	33.3	43.4
AMC - 12M-8R	12	1/2	9.5	22	22	22.8	22.0	38.9	49.0
AMC - 12M-12R	12	3/4	9.5	27	22	22.8	22.0	40.4	50.5
AMC - 15M-8R	15	1/2	12.0	24	25	24.4	22.0	38.9	49.0
AMC - 16M-4R	16	1/4	7.0	24	25	24.4	22.0	34.0	44.1
AMC - 16M-6R	16	3/8	9.5	24	25	24.4	22.0	34.0	44.1
AMC - 16M-8R	16	1/2	11.9	24	25	24.4	22.0	38.9	49.0
AMC - 16M-12R	16	3/4	12.7	27	25	24.4	22.0	40.4	49.0
AMC - 18M-8R	18	1/2	11.9	27	30	24.4	22.0	40.4	50.5
AMC - 18M-12R	18	3/4	15.1	27	30	24.4	22.0	40.4	50.5
AMC - 20M-8R	20	1/2	11.9	30	32	26.0	22.0	42.2	52.3
AMC - 20M-12R	20	3/4	15.9	30	32	26.0	22.0	42.2	52.3
AMC - 22M-12R	22	3/4	15.9	30	32	26.0	22.0	42.2	52.3
AMC - 22M-16R	22	1	18.3	35	32	26.0	22.0	47.0	57.0
AMC - 25M-12R	25	3/4	15.9	35	38	31.3	26.5	45.2	57.5
AMC - 25M-16R	25	1	21.8	35	38	31.3	26.5	50.0	62.3
AMC - 28M-16R	28	1	21.8	41	46	36.6	36.6	51.6	72.4
AMC - 28M-20R	28	1-1/4	21.8	46	46	36.6	36.6	52.3	73.1
AMC - 32M-20R	32	1-1/4	28.6	46	50	42.0	41.6	56.6	79.6
AMC - 32M-24R	38	1-1/2	33.7	50	50	49.4	47.9	58.1	91.6

* NPT Threads are available upon request.

Thermocouple Male Connector

TM

※ order method
AMC-4-4N-TM
AUT-4-TM

Bored-Through Fittings for Thermocouples, Dip Tubes, and Heat Exchanger Tees

