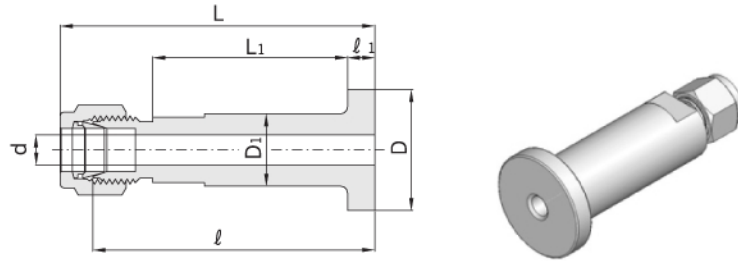


Flange Lapped Tube Connector

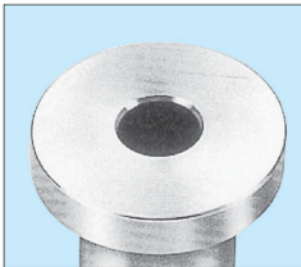
AFLC



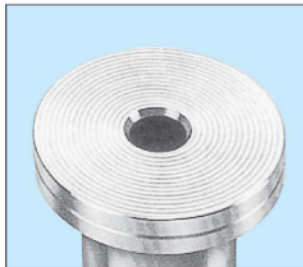
Hn-Lok Lapped flange connector provides safe and easy connections between process lines and instruments. It provides Hn-Lok tube connection ends by a lap joint pipe flange to ANSI B 16.5 or BS 1560. Both "smooth" and "serrated" surface finishes are available. For identification of serrated surface finish, groove is provided.

Part No.	Tube Size	Flange Seal	Dimensions							Flange Surface Finish (Ra)
			ℓ	ℓ_1	L	L ₁	D	D ₁	d min	
AFLC - 04SM	1/4"	SM	74.9	6.5	80.77	56.5	34.5	21.1	4.8	3.2 - 6.3 Micrometer
AFLC - 04SE	1/4"	SE	74.9	6.5	80.77	56.5	34.5	21.1	4.8	6.3 - 12.5 Micrometer
AFLC - 06SM	3/8"	SM	74.9	6.5	82.30	56.5	34.5	21.1	7.1	3.2 - 6.3 Micrometer
AFLC - 06SE	3/8"	SE	74.9	6.5	82.30	56.5	34.5	21.1	7.1	6.3 - 12.5 Micrometer
AFLC - 08SM	1/2"	SM	74.9	6.5	85.09	56.5	34.5	21.1	10.4	3.2 - 6.3 Micrometer
AFLC - 08SE	1/2"	SE	74.9	6.5	85.09	56.5	34.5	21.1	10.4	6.3 - 12.5 Micrometer

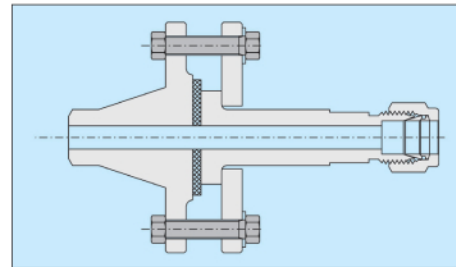
Surface Finish



Smooth (SM)



Serrated (SE)



Lapped flange connector installed with gasket between seal faces