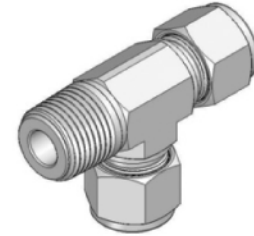
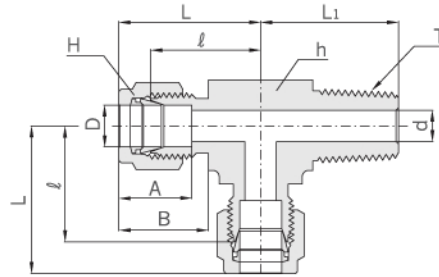


Male Run Tee  
**AMRT**



**Connects Fractional Tube To Female NPT Thread**

Part No.	Tube O.D. D		T* (NPT)	d Min.	Width across flat				A	B	ℓ	L	L <sub>1</sub>
	in	mm			h		H						
					in	mm	in	mm					
AMRT - 0202N	1/8	3.17	1/8	2.28	1/2	12.70	7/16	11.11	12.70	15.24	17.00	24.91	17.80
AMRT - 0204N	1/8	3.17	1/4	2.28	1/2	12.70	7/16	11.11	12.70	15.24	18.03	24.91	23.36
AMRT - 0302N	3/16	4.76	1/8	3.04	1/2	12.70	1/2	12.70	13.71	16.00	17.78	24.38	17.78
AMRT - 0402N	1/4	6.35	1/8	4.82	1/2	12.70	9/16	14.28	15.24	17.78	19.55	26.92	18.79
AMRT - 0404N	1/4	6.35	1/4	4.82	1/2	12.70	9/16	14.28	15.24	17.78	19.55	26.92	23.87
AMRT - 0502N	5/16	7.93	1/8	4.82	9/16	14.28	5/8	15.87	16.25	18.54	22.35	29.71	20.82
AMRT - 0604N	3/8	9.52	1/4	7.11	5/8	15.87	11/16	17.46	16.75	19.30	23.11	30.48	25.40
AMRT - 0606N	3/8	9.52	3/8	7.11	11/16	17.46	11/16	17.46	16.76	19.30	23.87	31.24	26.20
AMRT - 0806N	1/2	12.70	3/8	9.50	13/16	20.63	7/8	22.22	22.86	21.84	25.90	36.06	28.19
AMRT - 0808N	1/2	12.70	1/2	10.41	13/16	20.63	7/8	22.22	22.86	21.84	25.90	36.06	33.02
AMRT - 1008N	5/8	15.87	1/2	11.93	15/16	23.80	1	25.40	24.38	21.84	27.94	38.10	35.05
AMRT - 1212N	3/4	19.05	3/4	15.74	1-1/16	26.98	1-1/8	28.57	24.38	21.84	29.71	39.87	36.83

\* ISO Tapered Threads are available upon request.

**Connects Metric Tube To Female ISO Tapered Thread**

Part No.	Tube O.D. D	T* R(PT)	d Min.	Width across flat		A	B	ℓ	L	L <sub>1</sub>
				h	H					
				AMRT - M0302R	3					
AMRT - M0304R	3	1/4	2.4	12.7	12	12.9	15.3	18.0	24.6	23.4
AMRT - M0402R	4	1/8	2.4	12.7	12	13.7	16.1	18.8	25.4	18.8
AMRT - M0602R	6	1/8	4.8	12.7	14	15.3	17.7	19.6	27.0	18.8
AMRT - M0604R	6	1/4	4.8	12.7	14	15.3	17.7	19.6	27.0	23.4
AMRT - M0802R	8	1/8	4.8	14.3	16	16.2	18.6	21.3	28.8	19.8
AMRT - M0804R	8	1/4	6.3	14.3	16	16.2	18.6	21.3	28.8	24.4
AMRT - M1004R	10	1/4	7.1	17.5	19	17.2	19.5	23.9	31.5	28.2
AMRT - M1006R	10	3/8	7.9	17.5	19	17.2	19.5	23.9	31.5	28.2
AMRT - M1204R	12	1/4	7.1	20.6	22	22.8	22.0	25.9	36.0	28.2
AMRT - M1206R	12	3/8	9.5	20.6	22	22.8	22.0	25.9	36.0	28.2
AMRT - M1208R	12	1/2	9.5	20.6	22	22.8	22.0	25.9	36.0	33.0
AMRT - M1606R	16	3/8	9.5	23.8	25	24.4	22.0	27.9	38.0	30.2
AMRT - M1608R	16	1/2	11.9	23.8	25	24.4	22.0	27.9	38.0	35.1
AMRT - M2012R	20	3/4	15.9	30.0	32	26.0	22.0	34.5	44.6	41.7

\* NPT Threads are available upon request.