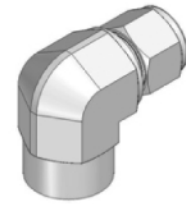
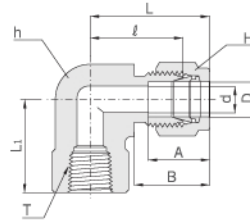


Female Elbow

AFE



Connects Fractional Tube To Male NPT Thread

| Part No. | Tube O.D. D | | T* (NPT) | d Min. | Width across flat | | | | A | B | ℓ | L | L ₁ |
|-------------|----------------|-------|-------------|-----------|-------------------|-------|-------|-------|-------|-------|-------|-------|----------------|
| | in | mm | | | h | | H | | | | | | |
| | | | | | in | mm | in | mm | | | | | |
| AFE - 0202N | 1/8 | 3.17 | 1/8 | 2.28 | 9/16 | 14.28 | 7/16 | 11.11 | 12.70 | 15.24 | 18.03 | 24.63 | 19.05 |
| AFE - 0204N | 1/8 | 3.17 | 1/4 | 2.28 | 11/16 | 17.46 | 7/16 | 11.11 | 12.70 | 15.24 | 20.82 | 27.43 | 22.35 |
| AFE - 0302N | 3/16 | 4.76 | 1/8 | 3.04 | 9/16 | 14.28 | 1/2 | 12.70 | 13.71 | 16.00 | 18.79 | 25.40 | 19.05 |
| AFE - 0402N | 1/4 | 6.35 | 1/8 | 4.82 | 9/16 | 14.28 | 9/16 | 14.28 | 15.24 | 17.78 | 19.55 | 26.92 | 19.05 |
| AFE - 0404N | 1/4 | 6.35 | 1/4 | 4.82 | 11/16 | 17.46 | 9/16 | 14.28 | 15.24 | 17.78 | 22.35 | 29.71 | 22.35 |
| AFE - 0406N | 1/4 | 6.35 | 3/8 | 4.82 | 13/16 | 20.63 | 9/16 | 14.28 | 15.24 | 17.78 | 24.38 | 31.75 | 22.35 |
| AFE - 0408N | 1/4 | 6.35 | 1/2 | 4.82 | 1 | 25.40 | 9/16 | 14.28 | 15.24 | 17.78 | 27.17 | 34.54 | 28.44 |
| AFE - 0502N | 5/16 | 7.93 | 1/8 | 6.35 | 9/16 | 14.28 | 5/8 | 15.87 | 16.25 | 18.54 | 21.33 | 28.70 | 19.05 |
| AFE - 0504N | 5/16 | 7.93 | 1/4 | 6.35 | 11/16 | 17.46 | 5/8 | 15.87 | 16.25 | 18.54 | 23.11 | 30.48 | 22.35 |
| AFE - 0602N | 3/8 | 9.52 | 1/8 | 7.11 | 5/8 | 15.87 | 11/16 | 17.46 | 16.76 | 19.30 | 23.11 | 30.48 | 19.05 |
| AFE - 0604N | 3/8 | 9.52 | 1/4 | 7.11 | 11/16 | 17.46 | 11/16 | 17.46 | 16.76 | 19.30 | 23.87 | 31.24 | 22.35 |
| AFE - 0606N | 3/8 | 9.52 | 3/8 | 7.11 | 13/16 | 20.63 | 11/16 | 17.46 | 16.76 | 19.30 | 25.90 | 33.27 | 22.35 |
| AFE - 0608N | 3/8 | 9.52 | 1/2 | 7.11 | 1 | 25.40 | 11/16 | 17.46 | 16.76 | 19.30 | 28.70 | 36.06 | 28.44 |
| AFE - 0804N | 1/2 | 12.70 | 1/4 | 10.41 | 13/16 | 20.63 | 7/8 | 22.22 | 22.86 | 21.84 | 25.90 | 36.06 | 22.35 |
| AFE - 0806N | 1/2 | 12.70 | 3/8 | 10.41 | 13/16 | 20.63 | 7/8 | 22.22 | 22.86 | 21.84 | 25.90 | 36.06 | 22.35 |
| AFE - 0808N | 1/2 | 12.70 | 1/2 | 10.41 | 1 | 25.40 | 7/8 | 22.22 | 22.86 | 21.84 | 28.70 | 38.86 | 28.44 |
| AFE - 1006N | 5/8 | 15.87 | 3/8 | 12.70 | 15/16 | 23.80 | 1 | 25.40 | 24.38 | 21.84 | 27.94 | 38.10 | 22.35 |
| AFE - 1008N | 5/8 | 15.87 | 1/2 | 12.70 | 1 | 25.40 | 1 | 25.40 | 24.38 | 21.84 | 29.71 | 39.87 | 28.44 |
| AFE - 1208N | 3/4 | 19.05 | 1/2 | 15.74 | 1-1/16 | 26.98 | 1-1/8 | 28.57 | 24.38 | 21.84 | 29.71 | 39.87 | 28.44 |
| AFE - 1212N | 3/4 | 19.05 | 3/4 | 15.74 | 1-3/8 | 34.92 | 1-1/8 | 28.57 | 24.38 | 21.84 | 34.54 | 44.70 | 31.75 |
| AFE - 1412N | 7/8 | 22.22 | 3/4 | 18.28 | 1-3/8 | 34.92 | 1-1/4 | 31.75 | 25.90 | 21.84 | 34.54 | 44.70 | 31.75 |
| AFE - 1612N | 1 | 25.40 | 3/4 | 22.35 | 1-3/8 | 34.92 | 1-1/2 | 38.10 | 31.24 | 26.41 | 36.83 | 49.02 | 31.75 |
| AFE - 1616N | 1 | 25.40 | 1 | 22.35 | 1-11/16 | 42.86 | 1-1/2 | 38.10 | 31.24 | 26.41 | 41.40 | 53.59 | 38.10 |

Connects Metric Tube To Male NPT Thread

| Part No. | Tube O.D. D | T* (NPT) | d Min. | Width across flat | | A | B | ℓ | L | L ₁ |
|--------------|----------------|-------------|-----------|-------------------|----|------|------|------|------|----------------|
| | | | | h | H | | | | | |
| AFE - M0602N | 6 | 1/8 | 4.8 | 14.0 | 14 | 15.3 | 17.7 | 19.6 | 27.0 | 19.00 |
| AFE - M0604N | 6 | 1/4 | 4.8 | 17.5 | 14 | 15.3 | 17.7 | 22.4 | 29.8 | 22.40 |
| AFE - M0606N | 6 | 3/8 | 4.8 | 20.6 | 14 | 15.3 | 17.7 | 24.4 | 31.7 | 22.40 |
| AFE - M0608N | 6 | 1/2 | 4.8 | 25.4 | 14 | 15.3 | 17.7 | 27.2 | 34.6 | 28.40 |
| AFE - M0804N | 8 | 1/4 | 6.3 | 17.5 | 16 | 16.2 | 18.6 | 23.1 | 30.6 | 22.40 |
| AFE - M0808N | 8 | 1/2 | 6.3 | 25.4 | 16 | 16.2 | 18.6 | 28.0 | 35.2 | 28.40 |
| AFE - M1002N | 10 | 1/8 | 7.9 | 17.5 | 19 | 17.2 | 19.5 | 23.9 | 31.5 | 19.00 |
| AFE - M1004N | 10 | 1/4 | 7.9 | 17.5 | 19 | 17.2 | 19.5 | 25.0 | 32.6 | 22.40 |
| AFE - M1006N | 10 | 3/8 | 7.9 | 20.6 | 19 | 17.2 | 19.5 | 25.9 | 33.5 | 22.40 |
| AFE - M1008N | 10 | 1/2 | 7.9 | 25.4 | 19 | 17.2 | 19.5 | 28.7 | 36.1 | 28.40 |
| AFE - M1204N | 12 | 1/4 | 9.5 | 20.6 | 22 | 22.8 | 22.0 | 25.9 | 36.0 | 22.40 |
| AFE - M1206N | 12 | 3/8 | 9.5 | 20.6 | 22 | 22.8 | 22.0 | 25.9 | 36.0 | 22.40 |
| AFE - M1208N | 12 | 1/2 | 9.5 | 25.4 | 22 | 22.8 | 22.0 | 28.7 | 38.8 | 28.40 |
| AFE - M1608N | 16 | 1/2 | 12.7 | 27.0 | 25 | 24.4 | 22.0 | 29.7 | 39.5 | 28.40 |

* ISO Tapered Threads are available upon request.