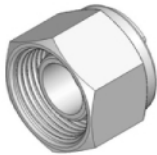
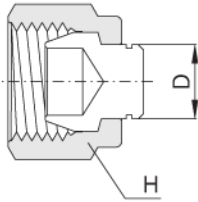




Plug AP



Installation Instruction
With wrench, 1/4 turn from finger-tight position
(1/8 turn for 1/8", 3/16" and 2mm, 3mm, 4mm
size plug, 1/2 turn for over 1" and 25mm)

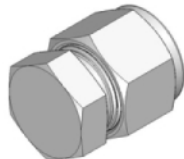
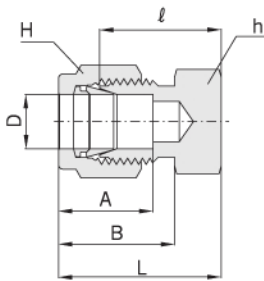
Connects Fractional Hn-Lok Port

Part No.	Tube O.D. D		Width across flat H	
	in	mm	in	mm
AP - 01	1/16	1.58	5/16	7.94
AP - 02	1/8	3.17	7/16	11.11
AP - 03	3/16	4.76	1/2	12.70
AP - 04	1/4	6.35	9/16	14.28
AP - 05	5/16	7.93	5/8	15.87
AP - 06	3/8	9.52	11/16	17.46
AP - 08	1/2	12.70	7/8	22.22
AP - 10	5/8	15.87	1	25.40
AP - 12	3/4	19.05	1-1/8	28.57
AP - 14	7/8	22.22	1-1/4	31.75
AP - 16	1	25.40	1-1/2	38.10
AP - 20	1-1/4	31.75	1-7/8	47.62
AP - 24	1-1/2	38.10	2-1/4	57.15
AP - 32	2	50.80	3	76.20

Connects Metric Hn-Lok Port

Part No.	Tube O.D. D	Width across flat H	Part No.	Tube O.D. D	Width across flat H
AP - M02	2	12	AP - 16M	16	25
AP - M03	3	12	AP - 18M	18	30
AP - M04	4	12	AP - 20M	20	32
AP - M06	6	14	AP - 22M	22	32
AP - M08	8	16	AP - 25M	25	38
AP - M10	10	19	AP - 28M	28	46
AP - M12	12	22	AP - 32M	32	50
AP - M15	15	25	AP - 38M	38	60

Cap AC



Installation Instruction
Follow Hn-Lok installation instruction on page 47

Connects Fractional Tube End

Part No.	Tube O.D. D		Width across flat				A	B	ℓ	L
	in	mm	h		H					
AC - 01	1/16	1.58	5/16	7.94	5/16	7.94	8.63	10.92	11.20	14.18
AC - 02	1/8	3.17	7/16	11.11	7/16	11.11	12.70	15.24	13.46	20.06
AC - 03	3/16	4.76	7/16	11.11	1/2	12.70	13.71	16.00	14.73	21.33
AC - 04	1/4	6.35	1/2	12.70	9/16	14.28	15.24	17.78	16.00	23.26
AC - 05	5/16	7.93	9/16	14.28	5/8	15.87	16.25	18.54	17.01	24.38
AC - 06	3/8	9.52	5/8	15.87	11/16	17.46	16.76	19.30	18.28	25.65
AC - 08	1/2	12.70	13/16	20.63	7/8	22.22	22.86	21.84	19.05	29.21
AC - 10	5/8	15.87	15/16	23.81	1	25.40	24.38	21.84	19.81	29.97
AC - 12	3/4	19.05	1-1/16	26.98	1-1/8	28.57	24.38	21.84	21.33	31.49
AC - 14	7/8	22.22	1-3/16	30.16	1-1/4	31.75	25.90	21.84	23.87	34.03
AC - 16	1	25.40	1-3/8	34.92	1-1/2	38.10	31.24	26.41	26.16	38.35
AC - 20	1-1/4	31.75	1-3/4	44.45	1-7/8	47.62	41.14	38.86	31.24	53.34
AC - 24	1-1/2	38.10	2-1/8	53.97	2-1/4	57.15	50.03	45.21	37.33	64.51
AC - 32	2	50.80	2-3/4	69.85	3	76.20	67.56	62.73	49.27	86.61

Connects Metric Tube End

Part No.	Tube O.D. D	Width across flat		A	B	ℓ	L
		h	H				
AC - M02	2	12	12	12.9	15.3	13.5	20.1
AC - M03	3	12	12	12.9	15.3	13.5	20.1
AC - M04	4	12	12	13.7	16.1	14.7	21.3
AC - M06	6	14	14	15.3	17.7	15.7	23.1
AC - M08	8	14	16	16.2	18.6	17.0	24.5
AC - M10	10	17	19	17.2	19.5	19.0	26.6
AC - M12	12	22	22	22.8	22.0	19.0	29.1
AC - M15	15	24	25	24.4	22.0	19.8	29.9
AC - M16	16	24	25	24.4	22.0	19.8	29.9
AC - M18	18	27	30	24.4	22.0	21.3	31.4
AC - M20	20	30	32	26.0	22.0	23.9	34.0
AC - M22	22	30	32	26.0	22.0	23.9	34.0
AC - M25	25	35	38	31.3	26.5	26.2	38.5
AC - M28	28	41	46	36.6	36.6	27.7	48.5
AC - M32	32	46	50	42.0	41.6	32.8	55.8
AC - M38	38	55	60	49.4	47.9	37.8	65.4